

Humidifan

Kitchen Fan HF150



The Humidifan series of automatic extract fans are designed for the specifier and contract user and, though competitively priced, offer many features only available on more expensive extract fans.

Three notable features are: ball bearing motor, auto reset thermal cut out and a lifetime guarantee on the sensor head. This model can be upgraded to an advanced Real Time data logging Datamatic fan system.

Special Features

- Lifetime guarantee on the humidity sensor head
- Three year guarantee
- Ball bearing fan motor
- Integral or remote humidity sensor
- Auto reset thermal cut out fuse on fan motor
- Night time set back to inhibit fan running in the silent hours
- Silent integral mechanical back-draught shutters
- Manual over-ride on switch
- Wall, window or ceiling fit
- Anticipatory response humidity sensor
- Can be upgraded to Datamatic 150 Real Time data logging fan with remote humidity sensor
- Complies with Building Regulations
- Quiet running
- Range of accessories
- Full technical back up

Operation

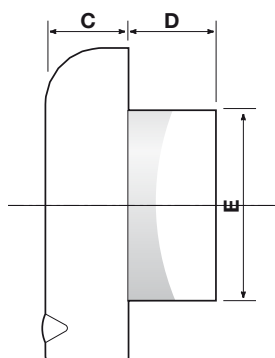
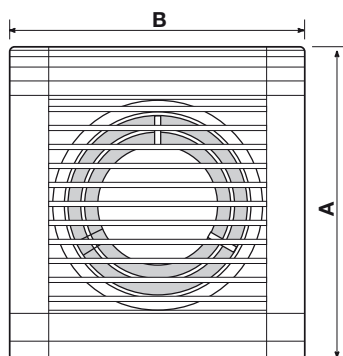
Under the control of a microprocessor, the sensor monitors continuously the Relative Humidity (RH) in the room. If there is a sudden rise in the RH, the sensor anticipates hitting the set point and activates the fan before it is reached. After the fan has reduced the RH to about 5% below the preset set point, the fan switches off. When the fan is running under sensor and microprocessor control the L.E.D. flashes.

The user can override the automatic monitoring by pulling the cord. In this override on mode, the red L.E.D. lights continuously. This shows the user that the fan is under manual operation. When the cord is pulled again, the sensor and microprocessor take back control of the fan.



Humidifan

Kitchen Fan HF150



SPECIFICATION KEY FACTS

- Silent integral mechanical back-draught shutter
- Anticipatory control
- Contamination proof sensor head with lifetime guarantee
- Three year guarantee as standard
- Ball bearing motor
- Auto reset thermal cut out

Construction

The Humidifan combines a stylish attractive case design with advanced electronic automatic controls. The motor is double insulated and is of the shaded pole type mounted on self-lubricating ball-bearings. The motor incorporates an overload protection device and conforms to EEC Directive 78-889 for radio interference. It will operate in ambient temperatures of up to 40°C. The fan complies to BS3456, BS800 and BS5490. The unit incorporates an electronic humidity sensor.

Installation

For best effect, the extract fan should be fitted at a minimum of 2 metres from floor level (where possible), but not closer than one metre to a major moisture producing source. The unit should not be fitted immediately above a cooker – a remote sensor should be used in this application, order code HF150/REM/W150.

Care must be taken if the fan is fitted in a room containing a fuel burning device without a balanced flue. There must be sufficient air replacement to prevent 'spillage'.

In many instances, a passive air vent, or an air brick, may need to be fitted to other cooler rooms within the property, in order to promote a good airflow throughout the dwelling.

Fitting Kits available:

WALL: Comprises wall sleeve and external grille (available in brown, terracotta, buff or white)

WINDOW: Mounting unit suitable for S/G or D/G windows.

For greater efficiency we would recommend that a fan and remote sensor configuration of this model be used for this application, order code HF150/REM/G150.

CEILING: Ceiling ring available for fitting into plasterboard. 150mm dia. ducting will be required. We only recommend that this axial fan be ducted a maximum 1.5 metres. For greater distances, a centrifugal or mixed flow type unit would be more appropriate. (see Centramatic and remote sensors data sheet)

FAN DIMENSIONS

Dimensions	A 230mm	B 200mm	C 52mm	D 63mm	E 148mm
Hole dimensions	Walls	158mm			
	Windows	188mm			
	Ceilings	158mm			
Insulation	Double insulated				
Voltage	240				
Power	28 watts				
Extract capacity	245 Cubic m/hr, 68 litres/sec				
Pressure mm H ₂ O	5.1				
dB(A)	45				

HUMIDITY SENSOR

Set at manufacture to activate the fan approaching 67% RH at 20°C

Night time set back 1% increase in set point for every 1°C below 20°C.

ORDER CODES

HF150	Fan with integral humidity sensor
HF150/REM	Kit comprising fan and separate humidity sensor
W150	Wall fixing kit
G150	Window fixing kit
C150	Ceiling fixing kit
HF6	150mm fan only
HF6 PC	150mm fan with pull cord

HEAD OFFICE

Stathe Road
Burrowbridge
Somerset, TA7 0RY
Tel: 01823 690292 Fax: 01823 690291
Email: info@airtechaunton.co.uk
www.airtechenvironmental.co.uk

LONDON & SOUTH EAST REGION

Suite 2, First Floor, Cadogan House,
36 Central Avenue, West Molesey,
Surrey, KT8 2QZ
Tel: 020 8941 8722 Fax: 020 8941 9623
Email: info@airtechlondon.co.uk
www.airtechenvironmental.co.uk

SOUTH WEST REGION

Unit 2 Halwin Industrial Estate
Porkellis, Helston
Cornwall, TR13 0LA
Tel: 01326 341423 Fax: 01326 341467
Email: info@airtechaunton.co.uk
www.airtechenvironmental.co.uk

