

Humidifan

Bathroom Fan SELV HFLV100



The SELV Humidifan series of automatic extract fans are designed for the specifier and contract user and, though competitively priced, offers many features only available on more expensive fans.

Three notable features are: ball bearing motor, auto reset thermal cut out and a lifetime guarantee on the sensor head. This model can be upgraded to the advanced Real Time data logging Datamatic fan system.

The fan incorporates a Dynamic Humidity sensor which is designed to operate the fan when any rapid increase in the relative humidity is sensed. When the water vapour has been extracted and the room returns to the previous humidity level, the Dynamic Controller will switch off the fan.

Special Features

Motor

- Lifetime guarantee on the humidity sensor
- Three year guarantee
- Ball bearing fan motor
- Integral or remote humidity sensor
- Separate 12v transformer
- Auto reset thermal cut out fuse on fan motor
- Night time set back to inhibit fan running in the silent hours
- Silent integral mechanical back-draught shutters
- Manual over-ride on switch
- Wall, window or ceiling fit
- Dynamic humidity sensor
- Can be upgraded to Datamatic Real Time data logging fan with remote humidity sensor
- Complies with Building Regulations
- Quiet running
- Range of accessories
- Full technical back up

Operation

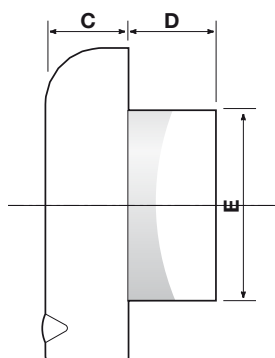
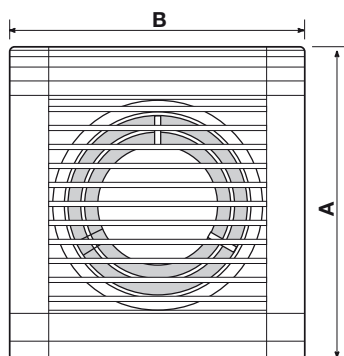
Under the control of a microprocessor, the sensor monitors continuously the Relative Humidity (RH) in the room. If there is a sudden rise in RH in the range 40%-75% the sensor activates the fan. After the fan has reduced the RH to the previous humidity level the fan switches off. When the fan is running under sensor and microprocessor control the L.E.D. flashes.

The user can override the automatic monitoring by pulling the cord. In this override mode, the red L.E.D. lights continuously. This shows the user that the fan is under manual operation. When the cord is pulled again, the sensor and microprocessor take back control of the fan.



Humidifan

Bathroom Fan SELV HFLV100



Construction

The Humidifan combines a stylish attractive case with advanced electronic automatic controls. The motor is double insulated and is of the shaded pole type mounted on self-lubricating ball-bearings. The motor incorporates an overload protection device and conforms to EEC Directive 78-889 for radio interference. It will operate in ambient temperatures of up to 40°C. The fan complies to BS3456, BS800 and BS5490. The unit incorporates an electronic humidity sensor.

Installation

The modular concept of the fan makes it easy to install in a WALL, CEILING or WINDOW.

WALL: easily installed with a wall venting kit comprising a wall sleeve and outside wall grille.

CEILING: time saving, optional ceiling ring available for fitting into plasterboard. 100mm flexible ducting.

WINDOW: single pane or sealed unit easily installed with window kit.

FAN DIMENSIONS

Dimensions	A 164mm	B 154mm	C 42mm	D 46mm	E 98mm
Hole dimensions	Walls	107mm dia.			
	Windows	130mm dia.			
	Ceilings	107mm dia.			
Insulation	Double insulated				
Voltage	12v AC				
Power	absorbed	10 watts			
Extract capacity	85 Cubic m/hr, 23 litres/sec				
Pressure mm H ₂ O	3.4				
dB(A)	38				

HUMIDITY SENSOR

Dynamic Humidity control range 40-75% RH

Night time set back 75% RH at 20°C to 85% RH at 10°C

TIMER

Timer range 1 to 30 minutes*

*At manufacture, the timer is set for a 15 minute overrun period. At installation, or subsequently, the scaled adjustment dial permits the timed period to be changed in the range 1 to 30 minutes.

ORDER CODES

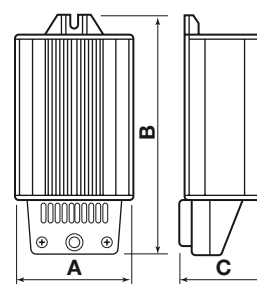
HFLV100	Fan with integral humidity sensor and separate transformer
HFLV100/REM	Kit comprising fan, separate humidity sensor and separate transformer
HFLV100T/REM	Kit comprising fan, separate humidity sensor/timer and separate transformer
HFLV100T	As HFLV100 but with timed over-run for integral bathrooms and toilets (no humidity sensor)
W100	Wall fixing kit
G100	Window fixing kit
C100	Ceiling fixing kit
HFLV4	100mm fan only
HFLV4 PC	100mm fan with pull cord
HFLV4T	1000mm fan with timer

Safety transformer, for installation outside the splash zone

Input voltage	230v 50-60Hz
Output voltage	12v 50Hz
Max load	60 VA
Weight	250gr
Class	F
Dimensions:	A 60mm, B 110mm, C 50mm.

SPECIFICATION KEY FACTS

- Silent integral mechanical back-draught shutter
- Dynamic control in range 40% RH – 75% RH
- Contamination proof sensor head with lifetime guarantee
- Three year guarantee as standard
- 12 volt SELV ball bearing motor
- Auto reset thermal cut out



HEAD OFFICE

Stathe Road
Burrowbridge
Somerset, TA7 0RY
Tel: 01823 690292 Fax: 01823 690291
Email: info@airtechaunton.co.uk
www.airtechenvironmental.co.uk

LONDON & SOUTH EAST REGION

Suite 2, First Floor, Cadogan House,
36 Central Avenue, West Molesey,
Surrey, KT8 2QZ
Tel: 020 8941 8722 Fax: 020 8941 9623
Email: info@airtechlondon.co.uk
www.airtechenvironmental.co.uk

SOUTH WEST REGION

Unit 2 Halwin Industrial Estate
Porkellis, Helston
Cornwall, TR13 0LA
Tel: 01326 341 423 Fax: 01326 341 467
Email: info@airtechaunton.co.uk
www.airtechenvironmental.co.uk