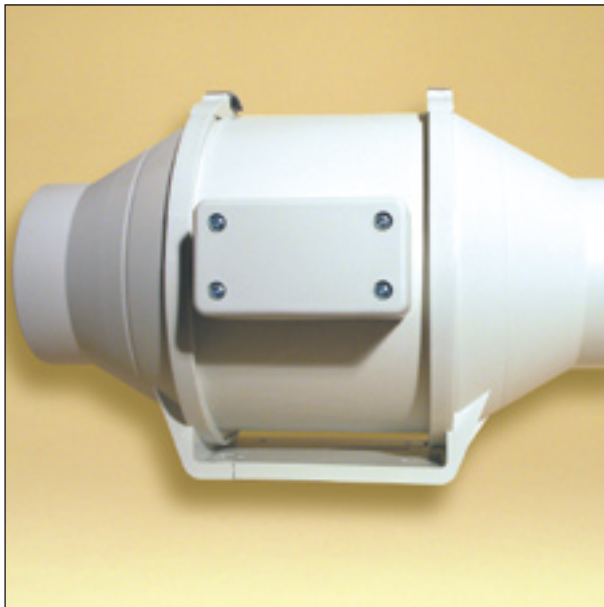


Mixflow In-line Fans



In-line mixed flow fans are designed for use in longer duct runs. Two standard sizes of in-line fans are generally used for kitchens, bathrooms and other appropriate applications.

Installation is straight forward and the fans include a mounting bracket.

A complete range of ducting, grilles and accessories is available.

Larger in-line fans are also available.

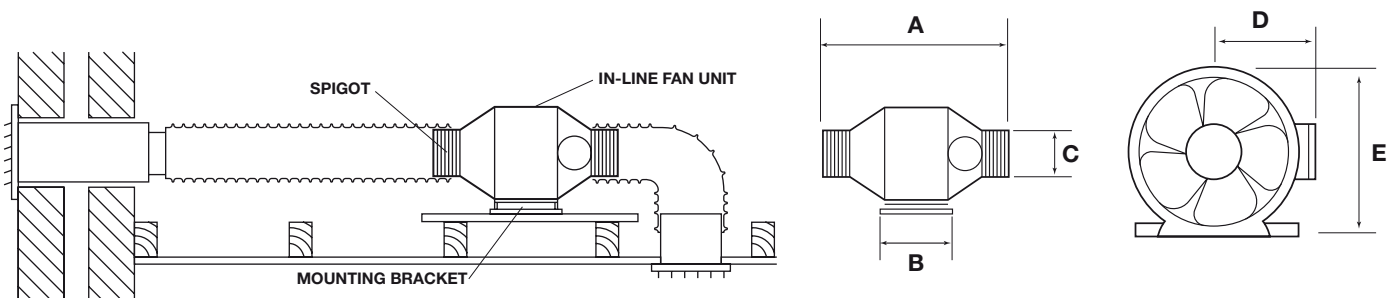
DIMENSIONS

	A	B	C	D	E
MFIL 160	232	120	100	100	151
MFIL 160T	232	120	100	100	151
MFIL 250	303	125	100	115	176

ELECTRICAL AND NOISE DATA

	MFIL 160	MFIL 160T	MFIL 250
Watts input	35	35	39
Amps	0.25	0.25	0.26
lpm	2500	2500	1880
dBa	18	18	28
Extract rate	160m ³ /hr	160m ³ /hr	250m ³ /hr

Remote humidity sensors and controllers available (see separate sheet)



ORDER CODES

MFIL 160	Bathroom in-line fan
MFIL 160T	Bathroom in-line fan with timer
MFIL 250	Kitchen in-line fan

HEAD OFFICE

Stathe Road
Burrowbridge
Somerset, TA7 0RY
Tel: 01823 690292 Fax: 01823 690291
Email: info@airtechaunton.co.uk
www.airtechenvironmental.co.uk

LONDON & SOUTH EAST REGION

Suite 2, First Floor, Cadogan House,
36 Central Avenue, West Molesey,
Surrey, KT8 2QZ
Tel: 020 8941 8722 Fax: 020 8941 9623
Email: info@airtechlondon.co.uk
www.airtechenvironmental.co.uk

SOUTH WEST REGION

Unit 2 Halwin Industrial Estate
Porkellis, Helston
Cornwall, TR13 0LA
Tel: 01326 341 423 Fax: 01326 341 467
Email: info@airtechaunton.co.uk
www.airtechenvironmental.co.uk



