

Multi-Room Extract System

Listed on SAP Appendix Q



Incorporating the latest technology energy saving EC motor and electronic controls, the MVS10 multi-room extract system offers a combination of benefits including low noise performance and easy to adjust airflow control with 11 speed steps.

Supplied with settings for low, normal and boost speeds the MVS10 can be quickly be altered by changing DIP switches on the unit. Control can also be via a three speed switch or a motor-less cooker hood.

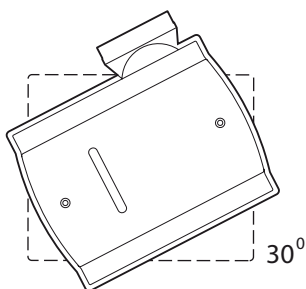
Wireless and external switch control options including an in-duct humidity sensor are also available on models within the MVS range.

Suitable for use with 125mm spiral steel, flexible or flat ducting, for channelling between joists, the multi-room extract system can also be supplied with plastic or metal room vents and roof cowls.

Special Features

- 11 speed steps
- Controlled by three speed switch or motor-less cooker hood
- Remote wireless control options
- In-duct humidity sensor control option
- Integrated motor and electronics
- Performance of 250m³/hr at 180pa

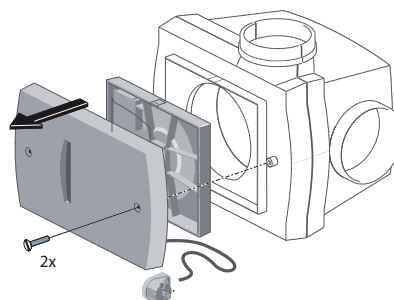
MVS Click system



General

- Robust injection moulded casing
- Easy to clean
- Ducting connections suitable for 125mm spiral steel, flexible or flat ducting
- Click adjust alignment
- Adjustable motor plate

Convertible motorplate



Benefits

- Energy saving motor
- Low noise fan
- Easy to adjust airflow controls
- Low, normal and boost speeds

Accessories

- Three step speed control
- Remote control with humidity sensor
- Room vents in plastic or metal
- Roof cowls

Multi-Room Extract System

Listed on SAP Appendix Q

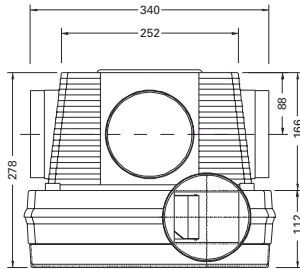
Technical Data

Fan Speed step	Capacity airflow	Voltage	Pressure	Power	Current	cos	Noise level exhaust	Noise level with silencer	Weight
MVS10	[m ³ /h]	[V]	[Pa]	[W]	[A]	[φ]	[dBA]*	[dBA]**	[kg]
1 low	78	230	12	4	0,05	0,35	21	17	3,3
2 low	110	230	23	6	0,06	0,43	30		
3 Middle	127	230	31	8	0,07	0,50	34		
4 Middle	142	230	39	10	0,09	0,48	38	26	3,3
5 Middle	154	230	45	12	0,1	0,52	41		
6 Middle	174	230	58	16	0,13	0,54	44		
7 High	218	230	91	26	0,2	0,57	49		
8 High	234	230	105	31	0,24	0,56	50	36	3,3
9 High	249	230	119	37	0,29	0,55	52		
10 High	263	230	132	42	0,33	0,55	53		
11 High	273	230	143	47	0,36	0,57	54		

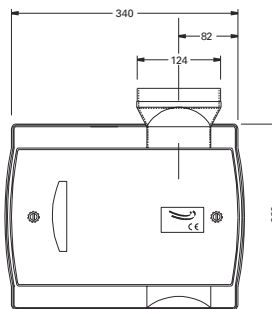
* = Measured on the 13 of February 2007 in the anechoic chamber of EBM Papst; Nr. 758, microphone 1m from exhaust opening

** = Measured on the 13 of February 2007 in the anechoic chamber of EBM Papst; Nr. 751, microphone 1m from MVS 10 including silencer

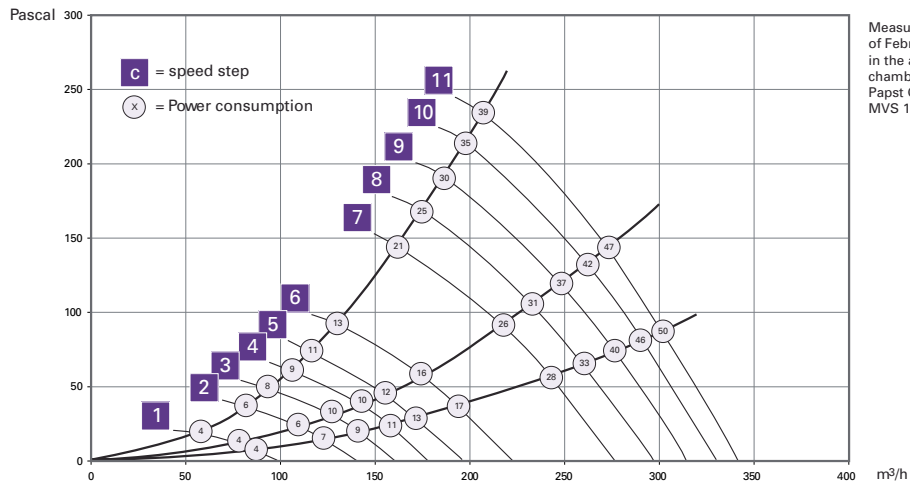
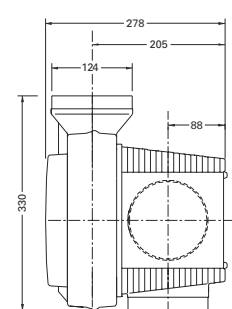
Top view



Front view



Side view



ORDER CODE

MVS10 SAP Q multi-room extract system

HEAD OFFICE

Stathe Road
Burrowbridge
Somerset, TA7 0RY
Tel: 01823 690292 Fax: 01823 690291
Email: info@airtechaunton.co.uk
www.airtechenvironmental.co.uk

LONDON & SOUTH EAST REGION

Suite 2, First Floor, Cadogan House,
36 Central Avenue, West Molesey,
Surrey, KT8 2QZ
Tel: 020 8941 8722 Fax: 020 8941 9623
Email: info@airtechlondon.co.uk
www.airtechenvironmental.co.uk

SOUTH WEST REGION

Unit 2 Halwin Industrial Estate
Porkellis, Helston
Cornwall, TR13 0LA
Tel: 01326 341 423 Fax: 01326 341 467
Email: info@airtechaunton.co.uk
www.airtechenvironmental.co.uk

